



**Sigillum**

**certify, authenticate, protect**

# COUNTERFEITS

---

***500 Billion \$***

The **yearly** value of fake goods sold worldwide,  
growing 15% each year.

# CYBERCRIME

---

**4.35M \$** is the average cost of a **data breach**

**33B** **records** stolen up to 2023

**14%** only of SMBs can **defend** themselves





automotive



art



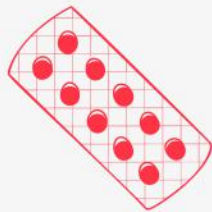
wines & spirits



cosmetics



fashion & luxury



pharma



electronics



# Sigillum

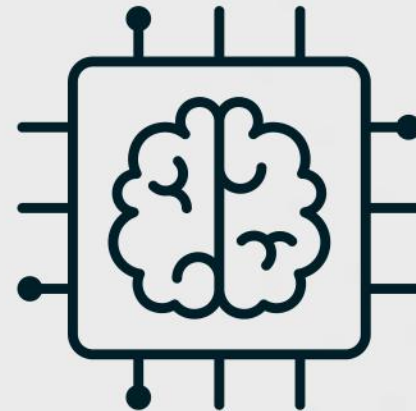
Securely **authenticate, trace**  
and **verify** tangible assets with  
our **cyber-secure** solution

# ARCHITECTURE

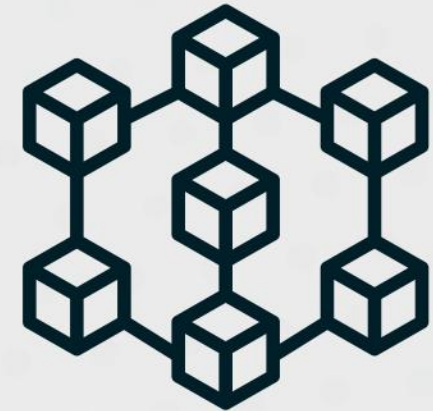
---



secure servers



AI + ML



blockchain



RFID/NFC tags, QR codes and/or any third party ID technology



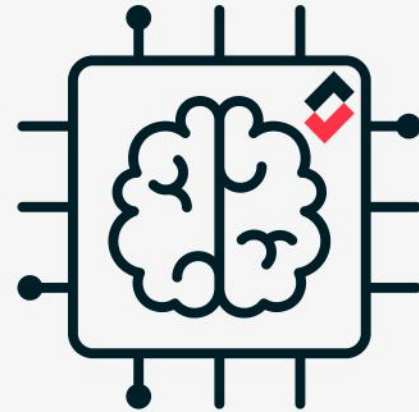
# OUR TECH

---



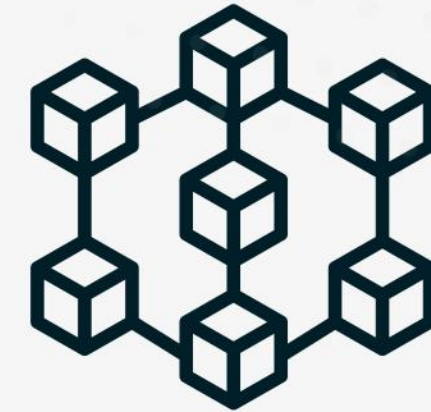
## Ransomware protection

**Secure** and specialized algorithms enhance ID solutions with strong **cybersecurity** primitives



## AI + ML

Trained models are detecting **anomalies**, patterns, threats and trends in **realtime**



## Databreach resistance

All sensitive data are **military-encrypted** and stored securely on the **blockchain**

# CUSTOM TAG

---

We bring the **security** of blockchain to tangible assets

**Zero trust** verification

✓ Batteryless

✓ No install



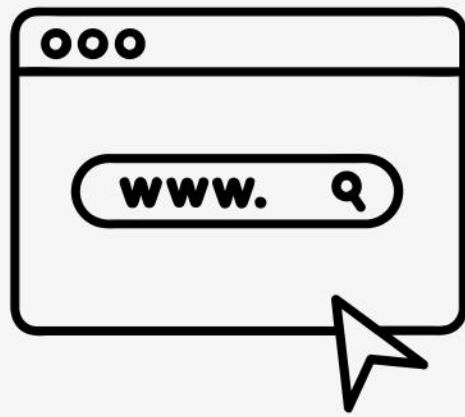
Unclonable ✓

Tamper check ✓



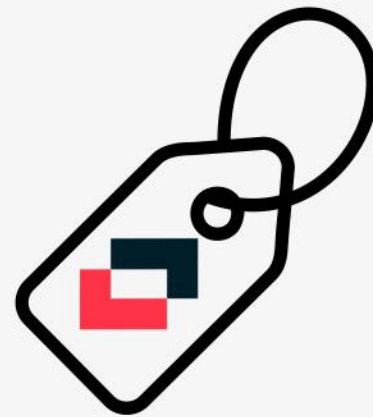
# HOW DOES IT WORK

---



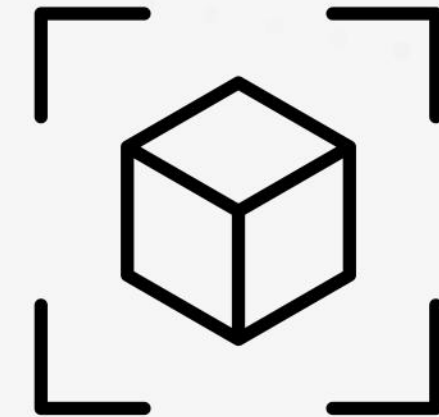
## Register

the IDs through our **APIs**  
or with the **platform**



## Apply

securely the ID to the  
asset



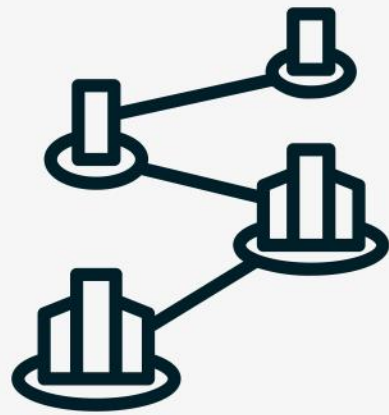
## Scan

to **authenticate, verify**  
and **trace** the asset



# COMPETITIVE

---



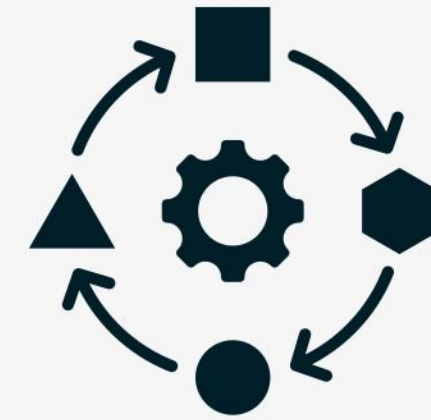
## Scalable & Robust

Based on **microservices**, our solution is made to **scale** and can serve billions of devices



## Integration

**Seamless** integration with existing systems, technologies and industrial **processes**



## Adaptation

**Customizable** and adaptable to different **industries** and technologies



# Sigillum

**certify, authenticate, protect**

Discover more on [sigillum.ai](https://sigillum.ai)

[info@sigillum.ai](mailto:info@sigillum.ai)

+39 348 0922 905